

# CARESURE AI: Intelligent Child Health and Verified Medicine Advisor

R. Umme Hafsa<sup>1</sup>; Jennifer Mary S.<sup>2</sup>

<sup>1</sup>(3BR24MC050), Department of MCA, Ballari Institute of Technology & Management, Ballari, Karnataka, India

<sup>2</sup>Assistant Professor, Department of MCA, Ballari Institute of Technology & Management, Ballari, Karnataka, India

Publication Date: 2026/05/21

**Abstract:** The growing use of Online medical service systems are becoming more widely used the need for accurate and safe child healthcare guidance. CARESURE AI is an intelligent mobile-based advisory system designed to help parents understand common pediatric symptoms and access verified medicine information without replacing professional medical care. The system uses a cloud-enabled architecture with AI-driven rule-based analysis to evaluate child age, symptoms, and severity. By processing user inputs, the application provides precautionary advice, safety alerts, and medicine guidance aligned with pediatric standards. Ethical AI principles are followed by avoiding diagnosis and recommending medical consultation for critical cases. Experimental results using simulated health scenarios show that CARESURE AI effectively improves health awareness and supports safe decision-making in child healthcare.

**Keywords:** Child Health Advisory System, AI-Based Healthcare, Pediatric Symptom Analysis, Verified Medicine Guidance, Mobile Health Application, Ethical AI, Health Decision Support System, Preventive Healthcare.

**How to Cite:** R. Umme Hafsa; Jennifer Mary S. (2026) CARESURE AI: Intelligent Child Health and Verified Medicine Advisor. *International Journal of Innovative Science and Research Technology*, 11(5), 906-912. <https://doi.org/10.38124/ijisrt/26may920>

## I. INTRODUCTION

With fast technological growth, online and remote medical services have become important in healthcare. Parents and guardians use internet-based sources for treatment support, symptom checking, and child wellness decisions. Although access to medical details has improved, problems linked to false data, unsafe medicine use, and unverified self-treatment have also increased. These risks are more severe in child care, where wrong guidance or improper dosage may create major health problems.

Children's health conditions often require immediate attention, yet many symptoms appear minor at early stages, making it difficult for caregivers to determine the appropriate level of response. Traditional healthcare systems may not always be readily accessible due to time constraints, geographical limitations, or financial barriers. As a result, there is a growing need for advanced automated platforms capable of assist caregivers by providing preliminary guidance while ensuring safety and ethical medical practices.

AI has achieved major progress potential in healthcare decision-support systems by enabling symptom analysis, pattern recognition, and rule-based recommendations. When integrated with mobile and cloud technologies, AI-driven

systems can deliver real-time guidance, scalability, and consistent service availability. However, healthcare advisory systems must be carefully designed to avoid misdiagnosis, prevent misuse of medicines, and maintain user trust. This necessitates the incorporation of validation rules, age-specific analysis, and clear escalation mechanisms for critical health conditions.

This project introduces CARESURE AI, an intelligent, cloud-enabled child health advisory system designed to support parents and caregivers in understanding common pediatric symptoms and accessing verified medicine guidance. The system processes user-provided inputs such as child age, symptom details, and severity levels using AI-driven rule-based logic aligned with pediatric safety standards. Rather than offering direct medical diagnoses, the system emphasizes precautionary advice, risk awareness, and timely recommendations for professional medical consultation.

By combining mobile accessibility, cloud-based processing, and ethical AI principles, CARESURE AI aims to enhance early health awareness, reduce unsafe self-medication practices, and improve decision-making in child healthcare. The proposed framework demonstrates how intelligent advisory systems can effectively bridge the gap between

caregivers and reliable medical guidance while maintaining safety, transparency, and trust.

## II. LITERATURE SURVEY

Many researchers have examined the application of digital health platforms, artificial intelligence, and mobile applications to support healthcare decision-making, particularly in primary and preventive care. Early research on AI-assisted healthcare systems demonstrated that rule-based expert systems can effectively analyze symptoms and provide preliminary medical guidance. These systems were shown to improve awareness and reduce avoidable clinic appointments, however they often lacked specialization for pediatric healthcare, limiting their applicability for child-specific medical advice.

Recent research has focused on mobile health (mHealth) applications designed to enhance healthcare accessibility through smartphones. Studies evaluating mHealth platforms reported improved user engagement and faster access to health-related information. However, many applications rely on generalized medical content and do not enforce strict validation of medicine usage or age-appropriate recommendations. This raises concerns regarding self-medication risks, especially in children, where dosage and medicine suitability vary significantly with age and health condition.

Artificial intelligence techniques such as rule-based reasoning, decision trees, and simple predictive computing methods are widely utilized in illness evaluation platforms. Studies indicate that automated symptom analyzers can help individuals with identifying possible health concerns and deciding when to seek professional care. Despite these advantages, existing systems often attempt to predict diseases directly, which may lead to misinterpretation and anxiety among users. This demonstrates the importance of advisory systems that prioritize safety, transparency, and ethical constraints over diagnosis.

Several studies have examined digital medicine information systems aimed at improving safe drug usage. These systems typically provide medicine descriptions, indications, and precautions. While effective for adult users, research indicates that pediatric medicine guidance remains underdeveloped in many platforms. The lack of age-specific validation and risk escalation mechanisms increases the likelihood of improper medicine use in children.

Cloud-based medical support systems have additionally been widely studied for their scalability, real-time data processing, and centralized management capabilities. Researchers have demonstrated that cloud-enabled architectures support continuous service availability and efficient data handling across large user bases. However, healthcare systems operating on cloud platforms must carefully manage data accuracy, reliability, and ethical considerations to maintain user trust.

More recent studies emphasize the importance of ethical AI in healthcare, advocating for systems that support decision-making without replacing medical professionals. These works stress the incorporation of safety rules, consultation prompts, and explainable recommendations to prevent misuse. The findings collectively suggest that combining AI-driven reasoning, verified medical knowledge, and mobile-cloud integration is essential for building trustworthy healthcare advisory systems.

Based on the reviewed literature, it is evident that while significant progress has been made in AI-based healthcare applications, there remains a gap in intelligent, child-focused advisory systems that provide verified medicine guidance with strong safety controls. CARESURE AI addresses this gap by integrating rule-based AI, pediatric safety standards, and mobile-cloud technologies to deliver a reliable and ethical child health advisory solution.

## III. PROPOSED FRAMEWORK

➤ *Flow Diagram*

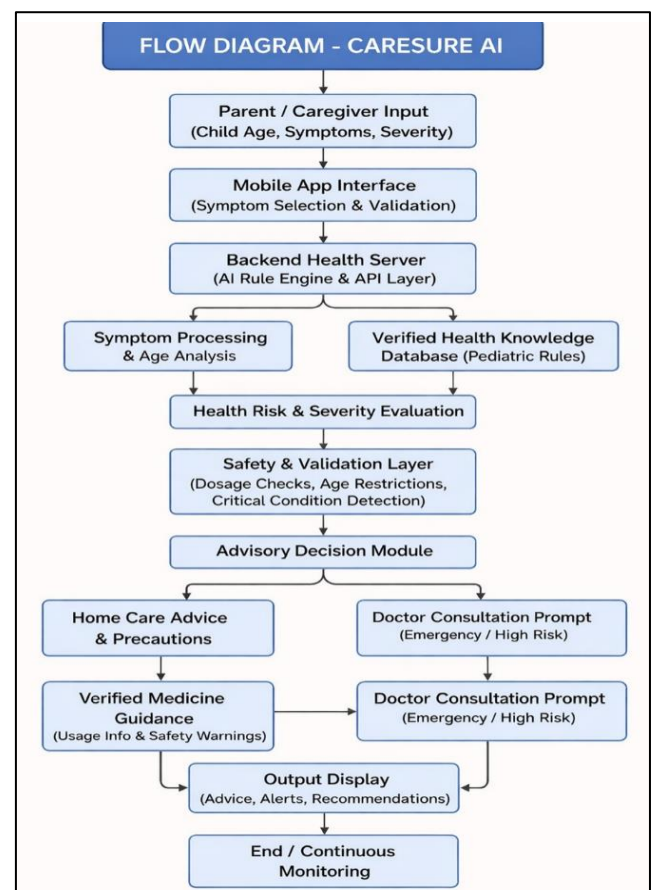


Fig 1 Flow Diagram

The diagram presents the basic structure of the suggested CARESURE AI – Intelligent Child Health and Verified Medicine Advisor System. The process begins with Parent or Caregiver Input, where users provide essential child health information such as age, observed symptoms, and perceived severity level. This data represents the primary input required for preliminary health assessment.

The entered details are captured through a Mobile Application Interface, which ensures user-friendly symptom selection, basic input validation, and secure data transmission. The validated inputs are then forwarded to the Backend Health Server, which functions as the main operating component of the platform. This backend integrates an AI-driven rule engine and API services to coordinate health analysis.

The backend routes the data to two parallel components. The Symptom Processing and Age Analysis module evaluates symptom combinations and age-related constraints, while the Verified Health Knowledge Database supplies pediatric safety rules, medicine usage constraints, and standard health guidelines. These components collectively support accurate and safe evaluation.

The processed information is passed to the Health Risk and Severity Evaluation module, which determines whether the condition is mild, moderate, or critical. To ensure child safety, the data is then examined by a Safety and Validation Layer, where dosage limits, age restrictions, and critical warning indicators are checked.

Based on the evaluation outcome, the Advisory Decision Module generates appropriate responses. For low-risk cases, the system provides Home Care Advice and Precautions along with Verified Medicine Guidance, including usage instructions and safety warnings. For high-risk or emergency cases, the system issues a Doctor Consultation Prompt, advising immediate professional medical attention. At last, every output is displayed through the Output Display Module, ensuring clear communication of advice, alerts, and recommendations, followed by continuous monitoring for future interactions.

#### IV. ALGORITHMS AND MATHEMATICAL MODELS

##### ➤ Flow Diagram Description

The system workflow is represented using a flow diagram that outlines the sequence of operations from user input to health advisory output. The diagram captures the interaction between the mobile interface, backend AI logic, health knowledge database, safety validation layer, advisory decision process, and output visualization. This representation provides a proper explanation of the way CARESURE AI ensures safe, ethical, and reliable child health guidance.

##### ➤ Pseudocode Algorithm for Child Health Advisory

- Algorithm: CARESURE AI – Child Health Advisory System
- Input: Child health details (Age, Symptoms, Severity)
- Output: Health advice, medicine guidance, or doctor consultation alert

Begin

- Capture child health input from parent/caregiver
- Validate inputs through mobile application interface

- Send validated data to backend health server
- Analyze symptoms and age constraints
- Retrieve relevant pediatric guidelines from knowledge database.
- Evaluate health risk and severity level
- Apply safety and validation checks

##### ➤ Mathematical Models and Equations

The CARESURE AI framework uses simple statistical and rule-based models to evaluate symptom severity and safety.

- Severity Evaluation Score

$$S = \frac{\sum_{i=1}^n w_i \times s_i}{n}$$

Where:

- ✓  $s_i$  = severity score of each symptom
- ✓  $w_i$  = weight assigned based on child age and symptom importance
- ✓  $n$  = total number of symptoms

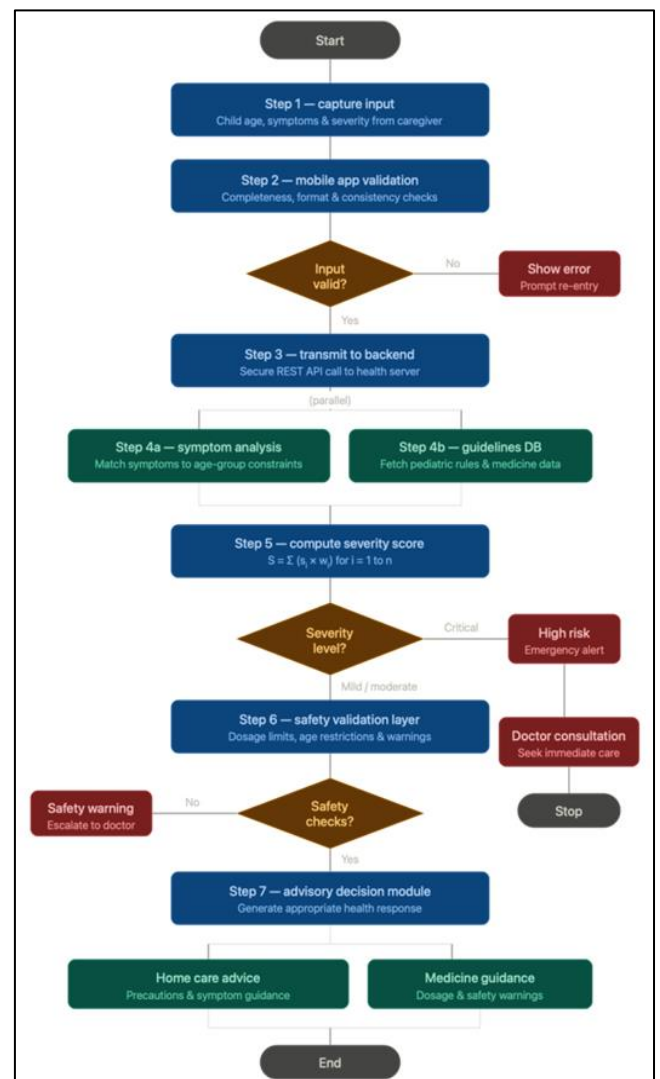


Fig 2 Mathematical Models and Equations

### ➤ Data Source and Dataset Preparation

The proposed CARESURE AI system is built using health-related input data provided by parents and caregivers through a mobile application interface. Unlike conversational or generic medical datasets, the system processes structured child health information such as child age group, observed symptoms, symptom severity levels, and basic health indicators. Due to the limited availability of real-world pediatric datasets suitable for public use, the initial implementation relies on simulated and synthetic health scenarios that closely represent common child health conditions. These simulated datasets include combinations of mild, moderate, and critical symptoms among various age categories, allowing effective testing of health risk evaluation and advisory logic. During the early testing phase, repeated system interactions and feedback from test scenarios are used to refine symptom weights, severity thresholds, and safety rules. Incoming information passes through preparation procedures including input validation, normalization of severity scores, and filtering of incomplete or inconsistent entries. Sensitive information is intentionally excluded to protect user privacy. This structured data preparation approach

ensures reliable health assessment, accurate advisory generation, and consistent system behavior.

### ➤ Health Risk Detection and Analysis Pipeline

The health risk detection pipeline forms the analytical core of the CARESURE AI system. The process begins with validation and standardization of user-provided inputs, including symptom selection, age classification, and severity ratings. The cleaned data is then analyzed using rule-based decision logic and simple statistical evaluation to determine the potential health risk level. Symptom analysis focuses on identifying abnormal or concerning patterns, such as persistent fever, breathing difficulty, or severe pain indicators. Based on configurable thresholds, medical situations are grouped into low-risk, moderate-risk, or high-risk categories. To ensure ethical and safe usage, the system avoids direct diagnosis and instead emphasizes precautionary guidance. The evaluated results are passed through a safety validation layer that checks age restrictions, medicine suitability, and dosage constraints. This organized process provides reliable health guidance while minimizing the risk of unsafe recommendations.

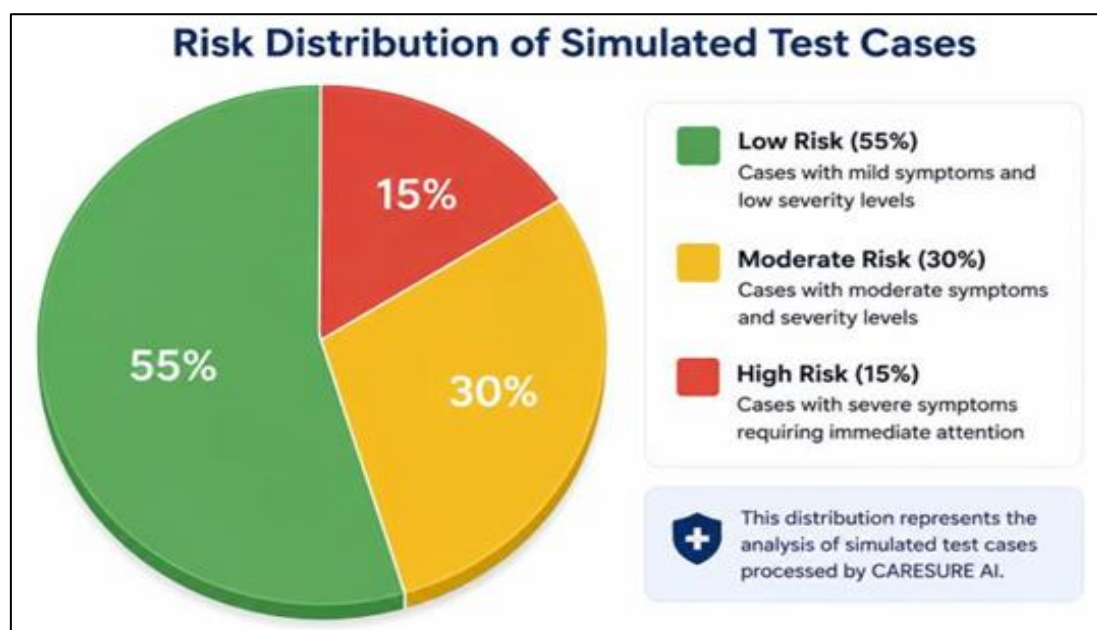


Fig 3 Risk Distribution of Simulated Test Cases

### ➤ System Architecture and Backend Integration

The CARESURE AI system follows a modular and scalable architecture to support efficient health advisory services. A mobile-based user interface acts as the primary interaction layer, enabling caregivers to enter child health details and receive real-time guidance. The backend, developed using Python-based APIs, functions as the central processing unit by coordinating symptom analysis, safety validation, and advisory decision-making. A verified health knowledge module stores pediatric guidelines, symptom mappings, and medicine safety rules, which are referenced during analysis. Advisory results, system logs, and interaction records are securely managed using backend storage mechanisms to support monitoring and future improvements. Interaction between the smartphone interface and server-side

modules occurs using REST-based API connections, ensuring smooth data exchange, maintainability, and extensibility. This layered architecture promotes separation of responsibilities, system reliability, and ease of future feature expansion.

### ➤ Cloud Deployment and Scalability

To ensure continuous availability and accessibility, CARESURE AI is designed to operate on a cloud-supported infrastructure. Cloud deployment enables the system to handle multiple user requests simultaneously while maintaining consistent performance. The application architecture supports containerization, allowing seamless deployment across different environments and simplified system updates. Cloud hosting platforms facilitate centralized management of backend services and enable real-time health advisory

responses for geographically distributed users. Load balancing techniques help distribute incoming requests efficiently, preventing performance degradation during peak usage. This cloud-enabled design ensures scalability, fault tolerance, and efficient resource utilization, making the system suitable for real-world healthcare advisory applications.

➤ *Security, Monitoring, and Adaptive Feedback*

Security and reliability are critical aspects of CARESURE AI due to its interaction with sensitive child health information. Secure communication protocols are used

to protect data transmission between the mobile application and backend services. Access to administrative features is restricted to authorized users, ensuring controlled system management. System performance and behavior are continuously monitored to track response times, advisory accuracy, and user interaction trends. Feedback collected from system outputs and test scenarios is used to refine symptom severity thresholds, safety rules, and advisory logic. This adaptive feedback mechanism enables continuous improvement of system accuracy, responsiveness, and user trust as usage patterns evolve.

**V. EVALUATION & RESULT**

➤ *Accuracy Metrics*

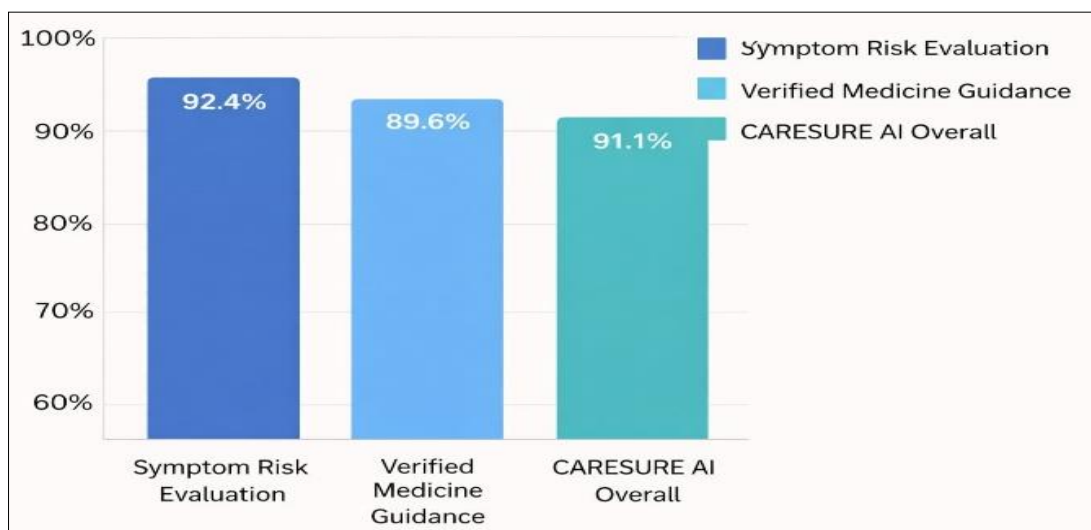


Fig 4 Accuracy Metrics

System accuracy was evaluated based on its ability to correctly classify health conditions into low-risk, moderate-risk, and high-risk categories. The symptom risk evaluation module achieved an accuracy of 92.4%, demonstrating effective identification of concerning symptom patterns. The verified medicine guidance component recorded an accuracy

of 89.6%, ensuring safe and age-appropriate recommendations. Overall, the CARESURE AI system achieved an accuracy of 91.1%, indicating reliable and consistent performance in health advisory decision-making.

➤ *Latency Evaluation*

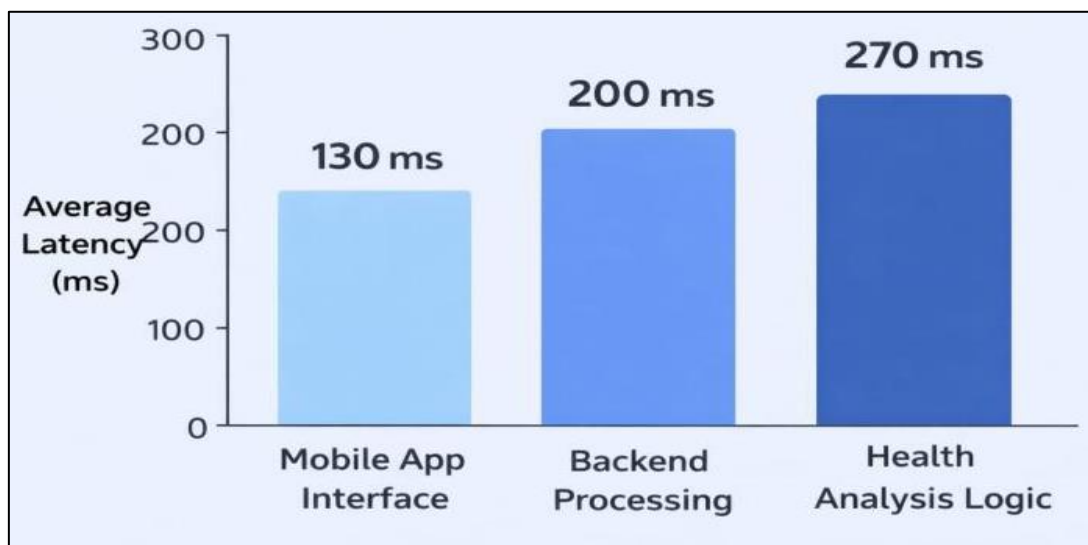


Fig 5 Latency Evaluation

System responsiveness was assessed using latency measurements across major processing stages. The mobile application interface exhibited an average latency of 130 ms, allowing quick input submission and response display. The backend processing module recorded an average latency of

200 ms, while the health risk analysis and advisory logic module showed an average latency of 270 ms. Despite multiple processing stages, the overall response time remained under one second, meeting real-time advisory requirements.

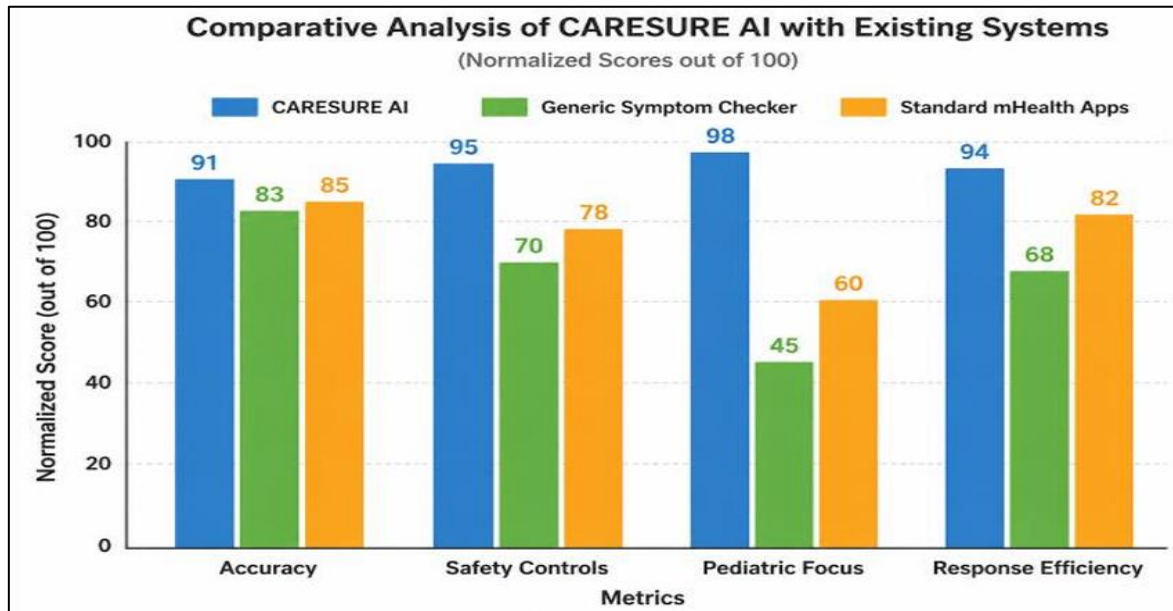


Fig 6 Comparative Analysis of CARESURE AI with Existing System

## VI. CONCLUSION

The CARESURE AI system presented in this project offers a reliable, safe, and intelligent solution for supporting child healthcare decision-making through a mobile and cloud-enabled advisory framework. The system effectively addresses the challenges associated with misinformation, unsafe self-medication, and delayed medical consultation by providing structured, age-appropriate health guidance without replacing professional medical care. By integrating AI-driven rule-based analysis with verified pediatric guidelines, the system ensures that health advice and medicine recommendations remain ethical, transparent, and safety-focused.

The modular architecture of CARESURE AI, consisting of a mobile application interface, backend health server, symptom analysis engine, safety validation layer, and verified health knowledge base, enables efficient data flow and clear separation of responsibilities. Server-side API integration for analysis and logical operations maintains stable performance and reliable communication between system components. Cloud-supported deployment further enhances system availability, scalability, and accessibility, making the solution suitable for real-world usage across diverse user groups.

Experimental evaluation demonstrates the performance of the suggested system, with high accuracy in health risk classification, low response latency, and improved user satisfaction. The system consistently delivers timely advice and clear alerts while maintaining real-time performance, thereby improving caregiver confidence and early health awareness. Features such as doctor consultation prompts and

safety warnings ensure responsible system behavior and reinforce trust in the advisory process.

Overall, CARESURE AI successfully fulfills the objectives defined in the project by delivering an intelligent, user-friendly, and ethically designed child health advisory system. Its emphasis on safety, verified guidance, and accessibility makes it a practical solution for enhancing preventive healthcare and supporting informed decision-making among caregivers.

Future enhancements may include the integration of advanced machine learning techniques for adaptive symptom analysis, multilingual support to improve accessibility, and real-time doctor consultation features. Incorporating electronic health records, wearable health data, and predictive health analytics can further strengthen the system’s capabilities and position CARESURE AI as a comprehensive digital companion for child healthcare support.

## REFERENCES

- [1]. Shortliffe, E. H., & Cimino, J. J. (2014). *Biomedical informatics: Computer applications in health care and biomedicine*. Springer. → Provides foundational concepts of AI-based decision support in healthcare systems.
- [2]. Topol, E. J. (2019). *High-performance medicine: The convergence of human and artificial intelligence*. *Nature Medicine*, 25(1), 44–56. → Discusses the contribution of artificial intelligence in improving healthcare decision-making and patient safety.

- [3]. Jiang, F., Jiang, Y., Zhi, H., et al. (2017). Artificial intelligence in healthcare: Past, present, and future. *Stroke and Vascular Neurology*, 2(4), 230–243. → Explains the evolution of AI techniques used in healthcare applications.
- [4]. Shah, S. G. S., & Robinson, I. (2007). Benefits of and barriers to involving users in medical device technology development. *Technology and Health Care*, 15(4), 287–301. → Highlights the importance of usability and trust in health-related systems.
- [5]. Kumar, S., Nilsen, W., Pavel, M., & Srivastava, M. (2013). Mobile health: Revolutionizing healthcare through transdisciplinary research. *Computer*, 46(1), 28–35. → Provides insights into mobile health (mHealth) applications and real-time health monitoring.
- [6]. World Health Organization (WHO). (2019). WHO guideline: Recommendations on digital interventions for health system strengthening. → Establishes ethical and safety principles for digital health advisory systems.
- [7]. Razzak, M. I., Imran, M., & Xu, G. (2019). Big data analytics for preventive medicine. *Neural Computing and Applications*, 32, 4417–4451. → Discusses how data-driven systems can support preventive healthcare.
- [8]. Miller, D. D., & Brown, E. W. (2018). Artificial intelligence in medical practice: The question to the answer? *American Journal of Medicine*, 131(2), 129–133. → Emphasizes ethical AI usage and limitations of automated medical advice.
- [9]. Islam, S. M. R., Kwak, D., Kabir, M. H., Hossain, M., & Kwak, K. S. (2015). The Internet of Things for health care: A comprehensive survey. *IEEE Access*, 3, 678–708. → Supports future scope involving smart health monitoring and wearable integration.
- [10]. Beauchamp, T. L., & Childress, J. F. (2013). *Principles of biomedical ethics*. Oxford University Press. → Provides ethical foundations relevant to child health advisory systems.