

Employee Payroll Management System

Prabu S, Akash Goyal, Anmol Agrawal, Siddhant Nagelia
School of computer science engineering, VIT Vellore 632014, Tamil Nadu, India

Abstract:- Employee payroll management system is a web-based application, which any organization can use to manage the records of the employees working in the company. Payroll Application has been designed to for the purpose of maintaining details of various employees, their allowances and deductions that need to be given to the employees of the organization. There will entry (Unique ID) of all the employee of any organization. According to the date of joining and date up to which salary is created, Number of days will be entered. Basic pay will be defined according to the post of employee and department. Then component like

- 1.DA
- 2.HRA
- 3.Medical allowance
- 4.Arrears

will be added, and

- 1.Charges of Hostel/ Bus

- 2.Security, welfare fund and other will be deducted.

Number of leaves taken by the employee. This system can be easily extended to any

- 1.Educational Institutes

2. Corporates

3. Any other organizations With minimal modifications.

Keywords:- Payroll Management, Salary, Allowances, leaves, deductions, web-based application, educational institutes, corporates.

I. INTRODUCTION

“Payroll Management” is a distributed application, developed to evaluate the performance of employees working in any organization. It maintains the information about a company, personal details of their employees, also the project details assigned to particular developer.

This project basically deals with four modules and their further sub modules. First module is the employee module into which we can enter employee details such as his name, address, phone number, his basic salary and many more. After that we can view the details further by using the employee id, and we can modify the details also.

Similarly in department we have the details of the departments like department name, department number, location and the project it is associated to Next comes the salary module in this we can view the salary issued to the employee. And can issue them to the employee we want to and can fix it to them.

Lastly we have the Leaves module which contains the leave details of the employee and is also linked with salary, as more earned leaves can cause deductions .

This is the basic overview of the whole project

A. Theoretical Background

HTML, CSS, JavaScript, PHP, MySQL, Wamp server, PHP my Admin has been used. HTML, CSS, JavaScript has been used for front end development since many years. Php has been the popular language for connecting the frontend with the back-end. MySQL database is one of the most common database software used. Wamp server is used to locally host the web-application in the machine for testing purposes.

B. Problem Definition

To prevent data redundancy and misuse of data, we have created an application where employees can login and check their AIM OF THE PROPOSED WORK

This aim of the proposed system is to contribute to the goal of achieving a database management system that manages to keep records of employees in the respective departments, thereby aligning with the motivation of the project.

The stated project is targeted at the delivery of a cost effective, compact and portable system that makes it the best choice of product for the end users. The ease of installation of this system aims to make it a suitable choice for easy insertion and management of records in any domain. The work aims to not only provide a high quality user experience, but also provide better features than the prevalent systems, while keeping in mind that these features are provided not at the compromise or loss of any other features that the existing systems provide.

personal details, leaves taken, salary deducted and all the functionalities mentioned above.

II. LITERATURE SURVEY

Employee this is the employee's information in the company. It consists of the employee identification number, employee name, designation, project name, date of joining, experience, phone number, sex, and date of birth. These details are given by the new user through webpage.

- *Salary*

It consists of attributes such as Basic Pay, DA, HRA, Welfare Fund,

Security, Charges –Hostel and bus, Medical Allowance of an employee specified by Employee_ID. Here Basic Pay depends on a person’s designation and experience. Existing users can see their Basic Pay, DA, HRA and net pay by specifying his Employee Id, earned leaves, Miscellaneous charges like hostel, bus, medical allowance.

• *Department*

This table gives the details of the various departments of the company. Its attributes are Department name, department number (which is the primary key), department location. These information are preexisting in the database. The database administrator manages it not the users.

• *Leaves*

It contains the leave details of the employees. A user need not have to give the details. The manager of the employee feeds these details to the database and a user can see his leave details like his available medical leave, casual leave, earned leaves, total available leaves and no. of leaves taken from the application. Project: It contains the different projects information like project name, project id (primary key) and location.

- The final salary of employee shall be computed taking into account the basic pay, various allowances, leaves and takes.
- A feedback Form manages to give feedback to their employee.

B. *Software Design Specification Diagrams*

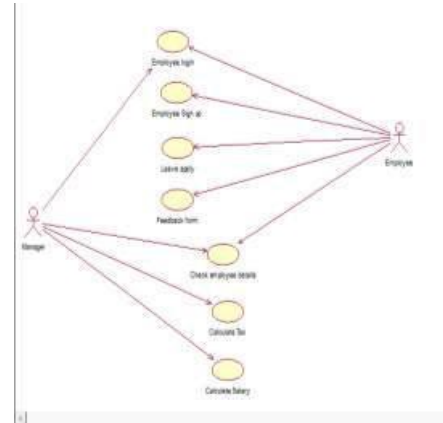


Fig 1:- Use Case Diagram

III. PROPOSED SYSTEM MODEL

The aim of our project is

- To ease and automate the process of employee payment process in any institution.
- To increase the security and safety of data as every manager has its own login area.
- To get validated data through constraints implemented on Oracle tables.
- To maintain different accounts of manager.
- To maintain different items data like New civil and construction projects, voter ID generation, agricultural details, etc.
- To search a specific item.
- To generate necessary reports like Bill Details, income details, tax payment details, etc.

A. *Functionalities*

- A login portal will be available for the existing employees.
- A portal for new employee where they will be entering their details.
- Facility to apply leaves for employees and to see the number of paid leaves remaining.
- Facility for employee to write grievances to their manager. 5. Facility for employee to change their employee’s location, department, project.
- The salary of employees and various allowance will be entered by the manager.

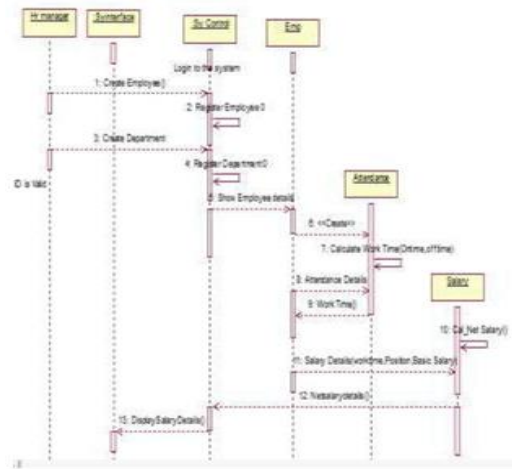


Fig 2:- Sequence diagram

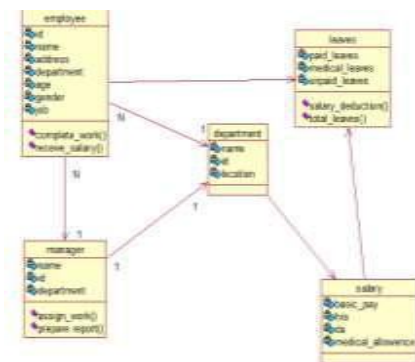


Fig 3:- Class diagram

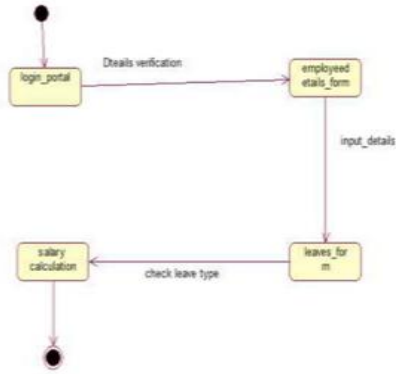


Fig 4:- State chart diagram

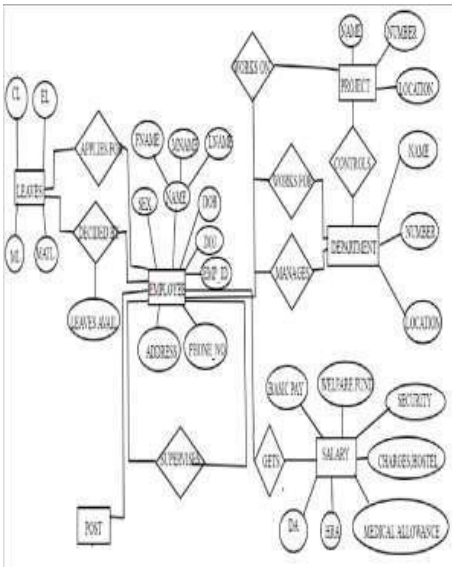


Fig 5:- ER Diagram

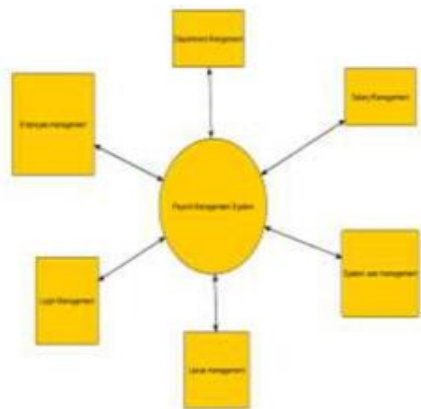


Fig 6:- Data Flow Diagram

C. System Requirements

• Hardware Requirements

Processor: I7
 MONITOR: 15.6” color screen
 HARD DISK: 40 GB
 SYSTEM TYPE: 64 bit Operating System, x64 based processor

• Software Requirements

Windows 10

My sql

phpMy Admin

notepad++

wamp server

web browser



IV. IMPLEMENTATION

A. Front-End

For front end we have used HTML, CSS, JavaScript. We have used wamp server for hosting the application.



Fig 6:- Login Page

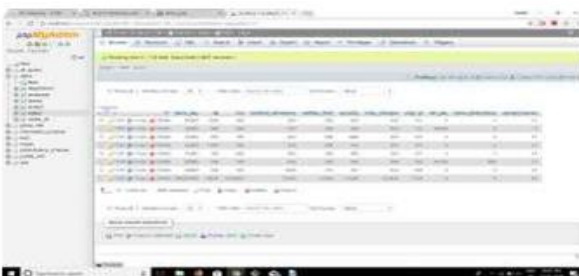
Alary Computation Page



Employee Leaves Page



B. Back-End



V. RESULTS

Employee details, Leaves and salary has been correctly stored in the database.

VI. CONCLUSION

We conclude, using this application we can easily insert the records and maintain them for long period of time. There is no chance of losing data and prevents data redundancy. We have prepared application where no other person other than the employee of the collector office can make changes in the database. The departments we used were Agricultural loans, Civil and construction projects, Voter ID department, and school and education department and energy consumption department. The main records are to be recorded and handled by the collector office’s employees in order to keep a check on the customers and applicants.

The employees cannot lose the data as there is delete option provided, but could be altered from the backend for future purpose. We can easily view the present details of the department so that we can cross check or do verification.

REFERENCES

- [1]. http://www.ijetae.com/files/Volume4Issue4/IJE_TAE_0414_140.
- [2]. Schmitt, Bob (10 October 2014). & quot; Collection Management Systems",. Retrieved 15 November 2015.
- [3]. Carpinone, Elana C. (May 2010), Museum Collection Management systems: One Size Does NOT Fit All, p. 26. Retrieved 5 December 2015.
- [4]. <http://www.tangedco.gov.in/linkpdf/Agri%20Form.pdf>: The pdf is a form to apply for agricultural loan. This gives us the idea about attributes required in database “Agricultural loans”.
- [5]. <http://ceoharyana.nic.in/?module=pages&pageid=42>: The link tells us about the requirements for Voter ID Generation. This information can be used to maintain the database.
- [6]. A Java API for the description of large complex networks under the object-oriented paradigm A. Ni~no1;y, C. Mu~noz-Caro1, S. Reyes1 and M. Castillo1 1 SciCom Research Group. Escuela Superior de Inform_atica de Ciudad Real,Universidad de Castilla-La Mancha. Paseo de la Universidad 4. 13004 Ciudad Real, Spain.
- [7]. Compiling and Optimizing Java 8 Programs for GPU Execution Kazuaki Ishizaki IBM Research– Tokyo ,Akihiro Hayashi Rice University ,Gita Koblenz IBM Canada, Vivek Sarkar Rice University