

Neutrality: The Multi-hoc Ultimate Source of Real Sense

Mohammad Jalaluddin Abbas
Department of Zoology
Aligarh Muslim University Aligarh-202002

Abstract:- A real image appears when estimative goes up to the end source which is developed into neutral mindset. The carrying capacity of any person depends on how much power of think sense in a particular mindset. Therefore, present paper is based on neutrality of research approaches of multi-hoc ultimate source several conceptive features. The demand is that, how could be used neutrality as ultimate source in a particular mindset which could realm the reality of surrounding world. Again, on what ways, convective measures related to and from which source has an inceptive approach and how we able to buildup a real image on mindset to confirm our findings. The resulted portion is corroborate to several theories to make much-more curative and some case studies have been used to determine as that close to higher level of research thinking which will procure to end source.

Keywords:- Neutrality, Multi-Hoc Ultimate Source, Mindset, Reality of Research, Implications.

I. INTRODUCTION

Understanding the nature of the human mind is arguably the greatest intellectual quest of all time (1). Thus, it is one of the most challenging tasks for psychologists and thinkers in nearly every intellectual pursuit for better understanding about human's nature. In the present study, I discussed one of the currently fruitful components (neutral technology) on human mind set from the functional bias of brain.

Temporal changes in mindset thinking may or may not result from myriad of processes operating at a hierarchy of spatial scales. Nevertheless, spatial scale thinking provides the platform to develop deepest mindset hierarchy until goes to terminal. This may prove by using multi-hoc net (MTH net) which worked on the basis of connecting to the link in a more number system matched with the same line as in the same way of connecting super power involved in its work. Thus, the path is in indirect situation rather than direct because of number provides the mach line as per the feeding exist or not. The contemporary lines similarly work as central dogma. Therefore, mindset is the central active component for fascinating the work to brain (Figure 1.a-d).

On the other hand, the real image or figuring on mindset is the structural active component which works based on non linear photo spectral imagining and is more complex than expected. This is because of cerebrum is much-much more complex in structure and thus form the image in a glorious minute time, thus probability of sense change begins more dynamic without delay the time set. The queered time decides the real imagining of such interesting way into closet mindset. The problem is how to solve closet to sense mindset and in what ways we might reach the end terminal in a much more natural way. Though the route is tough because of infinity elsewhere something might wrong or right yet still this makes to very easier our work if we are in resolving conditions of any research problem. As we know that in all the situations, we attempt the estimate of variance in more commonly all research without which we can't solve any research problem. Therefore, estimation is the real effectiveness of our research though right or not. Because of the research problem is actually based on our estimation or mind set which confirmed after experimental outlay.

Gods rays are yet to see ourselves neither light in or off however the corresponding activities can't absorb properly or in meagerly in any way by human eyes. Thus, we try to reach more depth via our research mindset thinking. In turn to finer situation of cerebral imagining on close objective or concerned matter, and then realistically it may convert into open environment could lead the micro evaluation of our mindset.

II. MINDSET EVALUATION

Today, we all acknowledge the significance of think sense mostly at research level. In many cases, the more clear links have been shown between the types and levels of research. However, research is much more dependent on the capacity to do work along with thinking of researcher by its mindset. The effect of research could stand the mindset of researcher because on what ways a researcher might be evaluate the single research work on how many angles. Thus for the fruitful findings, a researcher must be able to his/her mindset without which the research specific cannot processed any new frontiers for new to science. This may be psychologically indebted in many ways.

On the other hand, the connection of mindset to concerned research or research depth point (RDP) is generally related to the capacity or thinking power of a particular person however, moreover this connection goes up to infinity. Because of thinking power cannot measure by any of instrument, and the extent changes within, thus the infinite condition can be expected. Until recently, the impacts of research have been noted rigorously though stability of mindset at the level of research is much-much important. Therefore, at the priority basis, mindset is a noble analyzer of sustainable research. RDP may be much closer to mindset.

III. NEUTRALITY

Neutrality is an ultimate source of real sense. Although, it is much more depend on stable mindset than in dynamic situation. Nevertheless, from where dynamic situations come and why they can't connect to man power could lead the productive think forever. Because of neutrality or discharge falling at this stage, the connection is off away from the source naturally originated. Thus, neutral condition is the best for considering the thinking and mindset which might go farthest way than expected. This is because of the dark sight against the mind develops the think sense in a natural way. Therefore, by using this neutral path we might reach to infinity where meets the superpower on the last frontier. Nothing is infinity besides that if not countable or measurable, the expectations made that for infinity. However, there is not infinite before the end source. The most important example in this way is the use of mobile ad hoc which might consider in more prosperous way. The farthest way for calling from mobile is not fixed, thus why not considered as infinite. On the other hand, it is not cleared that the produced waves might or might not reach to the way for calling at end source thus measures cannot come into the existence. However, there is currently no legal information on it in a harmonized manner.

RDP facilitates the research evaluation besides that RDP depends upon mindset stability. Therefore, those who

deeply concentrate the mind as priority base, they confined more research up to the fruitful events of their research evaluation. Nevertheless, RDP could be understood about and up to the real way of power which generate from elsewhere. Thus, RDP provides the path for priority which will carry the future research plan or against the research ultimate source. However, without development of neutral mind, RDP cannot produce or goes up to the end source. Thus, neutrality is the mother born for RDP and the ultimate source of mindset goes up to the reality of research. Hence, neutrality is expected to make good judgments or facilitate research in several ways, to develop new ideas, technologies and applied into experimental form. However this is totally dependent on mindset stability.

Neutrality is distinct (though not exclusive) from apathy, ignorance, indifference, doublethink, equality (2), agreement and objectivity. Thus, a neutral person can provides a platform for deep opinions in a more right way. Neutrality may look upon a character that is an escape from one's duty to think and to act which may or may not oppose to the modern trend of esteeming the sense. According to Dante, The darkest places in hell are reserved for those who maintain their neutrality in times of moral crisis (3). Oppose to this statement, Woodrow Wilson stated that neutrality is a negative word (4). The statement may be right however this fact is not tested very earnestly. Therefore, it may count as a counterintuitive in some way.

Neutrality is the tendency not to side in a conflict (physical or ideological), (5, 6 & 7) and can be synonymous as an unbiased term. Thus, neutrality is often expected to make judgments or facilitate all along independency of any research or bias. If we would like to go to the interest on discussion, neutral parties are often perceived as more trustworthy, reliable, and safe (7) than general parties or discussion events. This means, neutrality develops some better mindset thinking up to the real required sense.

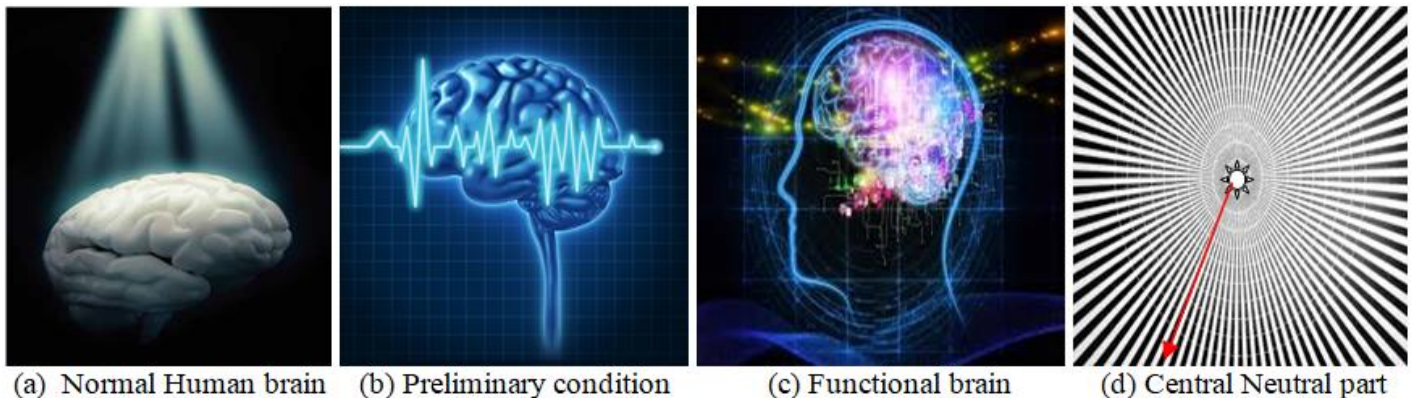


Fig 1:- Temporal situations under human brain functioning

IV. CONCLUSION

Today, technological neutrality is roughly an idea; however it can solve the particular types of technological artifacts. This paper examines the idea of technological neutrality for both its internal coherence to its relationship with mind set. All humans show the neutral face under critical situations and those not shows suffer from flunk situations. These situations are contemporary depends on timely mind set. Therefore, neutrality depends directly or indirectly on mind set situations.

REFERENCES

- [1]. Kanwisher, Nancy (2010). Functional specificity in the human brain: A window into the functional architecture of the mind. PNAS Early Edition. pp. 1-8. www.pnas.org/lookup/suppl/doi:10.1073/pnas.1005062107/-/DCSupplemental.
- [2]. There are excellent maps of undersea cables by Telegeography.
- [3]. Baddeley, Alan (1986). Working Memory. Oxford: Clarendon Press.
- [4]. Graham, Daniel and Daniel Rockmore (2010). The Packet Switching Brain. Journal of Cognitive Neuroscience 23:2, pp. 267–276.
- [5]. Teilhard de Chardin, Pierre (1959). The Phenomenon of Man. Harper. It's important to temper your enthusiasm for this book by reading Peter Medawar's famously brilliant and stinging critique, highlighting "the gullibility which makes it possible for people to be taken in by such a bag of tricks as this.
- [6]. Russell Peter (2000). The Global Brain Awakens. Element Books.
- [7]. Humphrys, Mark. Distributing a Mind on the Internet: The World-Wide-Mind. Proc. 6th European Conf. On Artificial Life (ECAL-01).