

Social Movement in Barifola

(Case Study: The Development of Livable House in Ternate Island, Ternate)

Dedi M Buamona¹

¹Urban and Regional Planning Department
Faculty of Engineering, Brawijaya University
Malang-Indonesia

Ismu Rini Dwi Ari², Surjono³

^{2,3}Urban and Regional Planning Department
Faculty of Engineering, Brawijaya University
Malang-Indonesia

Abstract:- In the Medium-Term National Development Plan 2015-2019, the development of the livable house is one of the works that need to be handled. The existence of Barifola is in line with the government's aim in developing a livable house. But the reason how this happened, what the history was, and the impact are still unknown. The aim of this study is to find out the development of Barifola chronologically as well as the impact of the program. This study is a qualitative descriptive study. The data collecting method used in this study is by using a thorough interview. The interview was done by using the question list. This study was done in November 2018. Based on the basic assumption, the existence of social capital in society might play a major role. The results of this study are: First, Barifola Program was initially founded by Community Organization of Tidore Family (IKT). The development of Barifola is divided into three periods before and after 2008. The year of 2008 was the first year Barifola program was conducted. Second, the social impacts are including the implementation of social values, charity, hospitality, and the raising of mutual assistance's spirit. Meanwhile, the impact of the development is proven to help the government in overcoming the unlivable house.

Keywords:- Social movement; Barifola .

I. INTRODUCTION

In 2015, the Central Bureau of Statistics recorded nationally that unlivable house in Indonesia reaches almost 2,51 million units with 2,18 million prone to livable and 0,33 million is very unlivable. The target of the Medium-Term National Development Plan 2015-2019 is to decrease the number of unlivable houses from 2,51 million units to 1,9 million units.

One of the special social capitals that can make people work together is because there is a social relationship or network between them. The social capital is translated as one of the parts in people's social life (network, norms, and beliefs) which push the participants to act together more effectively to reach the goal with each other [1]. As another capital form, social capital is also effective and attached within the actor relationship structure and between actors [2]. The social capital is not only about interaction relationship that involves certain people's behavior, but also individuals in the groups that form a social network. It means that social capital reflects two dimensions which are structural component consists of the social network,

association, and participants and also cognitive components consist of common norms, beliefs, reciprocity [3].

Besides, social capital can also be seen as an individual's tribute and relationship that can increase the ability to solve problems collectively [4]. The study done by Hikmawati and Gutomo in Kulonprogo Regency shows that society social capital in House Makeover Program (PBR) which was done because of society's participation was successfully proven in overcoming poverty especially in providing livable houses for poor family [5].

Ternate Island is one of the largest islands in Ternate. In the early of 2008, the Tidore ethnics who are also the inhabitants of the island launched Barifola program through the Community Organization of Tidore Family (IKT). In etymology, Barifola consists of two syllables: Bari means mutual assistance and Fola means house, so Barifola can be translated as mutual assistance activity to build a house. Barifola is a house makeover program for those who need. The indicator of the house that is going to be rebuilt by Barifola team is based on the Regulation of Ministry for Public Housing number 22 in 2008. There is also an economic social condition and term that needs to be fulfilled. The uniqueness of Barifola is that the whole funding of the house makeover will be covered by Barifola.

Barifola program is a great program that is in line with the government's aim in developing livable houses. But the reason how this happened, what the history was, and the impact are still unknown, so the aim of this study is to find out the chronological of Barifola's development and the impact of this program.

II. RESEARCH METHOD

This study is a qualitative descriptive study. The data collecting is done by doing a thorough interview to the executive board of the Community organization of Tidore Family and Barifola team consists of Barifola's coordinator and staff. The staff of Barifola live in three different subdistrict in Ternate Island which are Ternate Island SubDistricts, South Ternate Sub-Districts, and Central Ternate Sub-Districts. There are three main question lists in this study which are the chronology of Barifola, regulations, and penalty, and also the activities which are conducted related to the development of livable housing in Ternate Island, Ternate.

III. RESULTS AND DISCUSSION

A. General Discussion

In general, Barifola is almost the same as other house makeover programs that are broadcasted in one of the television stations in Indonesia. But, the thing that makes Barifola different from those TV programs is the foundation to do this. It is based on family fundamental, kinship feeling, and the same origin that move the people there to help each other [6]. The interesting part is that Barifola also has attention in the effort of pushing the society to work together. The local women’s community also provides food for the workers.



Fig 2:- The Map of Ternate Island



Fig 1:- Barifola Scheme

The source of the funding of the program is from donors and also people from Tidore ethnic that is under one movement called Calamoi (One Thousand Rupiah Movement). In constructional, the house that is going to be built is semipermanent houses with the area of 7x6 meters with 2 bedrooms, a living room, a dining room, doors, panel window with ceiling, electricity installation, and drinking water. But, in the implementation of the house’s sizes can change depends on the existing data source. In some houses that are already built, a few teams from the Community Organization of Tidore Family donated tiles and furniture. The social capital owns either individual or group really influences society’s participation [7]. Social capital formed from the social bond, that results in positive society collective acts. That social bond formed from the social network that makes coordination and communication happen, as well as the belief that implies to trust each other, and norms within groups. That’s why solidarity is formed and creates regulations and penalty [8].

Barifola is only a tiny element in cultural values that is worth to be preserved. The society’s participation is indeed from cultural values because from those values, equality, humanity, and compassion find its concrete footing [9]. The social capital is created by the existence of tradition within society’s life which is based on both individual rules and organizations in everyday life. Norms that create social capital must insert values substantially including honesty, the fulfillment of duty, and the willingness to help each other and commit together. The social capital values in Barifola will be much stronger if all society values the norms.

B. The Chronology of Barifola’s Development

➤ Before 2008 (The Origin of Barifola)

It was started from Mr. Burhan Abdurahman’s (H. Bur) concern as the Chairman of the Community Organization of Tidore Family who saw a family lived in an unlivable house. Then, he had the initiative to build a new semi-permanent house for them. At that time, he didn’t have the ability to build the permanent one (from concrete). That unlivable house’s walls overall were from cardboard box mixed with triplex and zinc pieces. That was Barifola concept showed up.

The target of this social act is aimed for a family who is really in need. It is for a family who doesn’t have a house yet and limited financial to build one or a family who has an unlivable house both socially and healthily. After that, the family who will be helped must fulfill two main requirements. The first is the jurisdiction requirement; it is related to the certainty of the right landowner and building (house). This requirement is needed to avoid land dispute once the house is rebuilt. The second requirement is the social-economy. The family that will be helped is the one who; 1) has monthly income below Rp 500.000, 2) is elder single parent (widow/widower) and doesn’t have any relative or close friends who become the breadwinner, 4) has a lot family liabilities including sending the kids to school or have married children but do not have a job

yet/fixed income and live in one unlivable house [10]. This Barifola can be the sharing resources media in a community that is based on trust and norm, so it is possible to mobilize the community's source to reach the goal together [11].

➤ *In 2008-2009 (Internal Development)*

In the early of March in 2008, it was the very first activity conducted by Barifola. The house that was rebuilt belongs to Mr. Senen who lives in Santiong Village, Central Ternate SubDistrict. In this period, the targets of the house makeover program are still for poor Tidore citizens and only focused on the building. There wasn't any thought to complete the house with some decorations or furniture including bed, closet, and others.

The total number of houses that were rebuilt are 6 units and only around Ternate Island. Besides, there wasn't any organizational structure of Barifola in this period. It was done by the Community Organization of Tidore Family, so the communication and coordination were still hard due to some of the committee members who were responsible for the program are Civil Servants. That's why sometimes it was hard to conduct Barifola program because of their hectic activities at the office.

➤ *In 2009-2018 (Internal-External Developmet)*

In June 2009, the organizational structure of Barifola finally was created. This formation was aimed to give easy access to communicate and coordinate between Barifola members, so everything will be more organized. Overall, the members of this organization were 40 people who have different occupation backgrounds. There are Civil Servants, private sector employee, builder, motorcycle driver, and truck driver.

In this period, Barifola didn't only focus on the houses belongs to citizens in Tidore, but also all society around Indonesia. This organization started to broaden their targets no matter what race or religion background the person has. Everyone has the same treatment. The expansion of Barifola also reached to some of the Regions/Cities in North Maluku. The total number of houses that were built from 2008-2018 are already 214 units. There was a moment when the president of Republic Indonesia, Mr. Jokowi, handed the 149th key himself. The president also appreciates to all committees of the Community Organization of Tidore Family because they can help the society's welfare too.

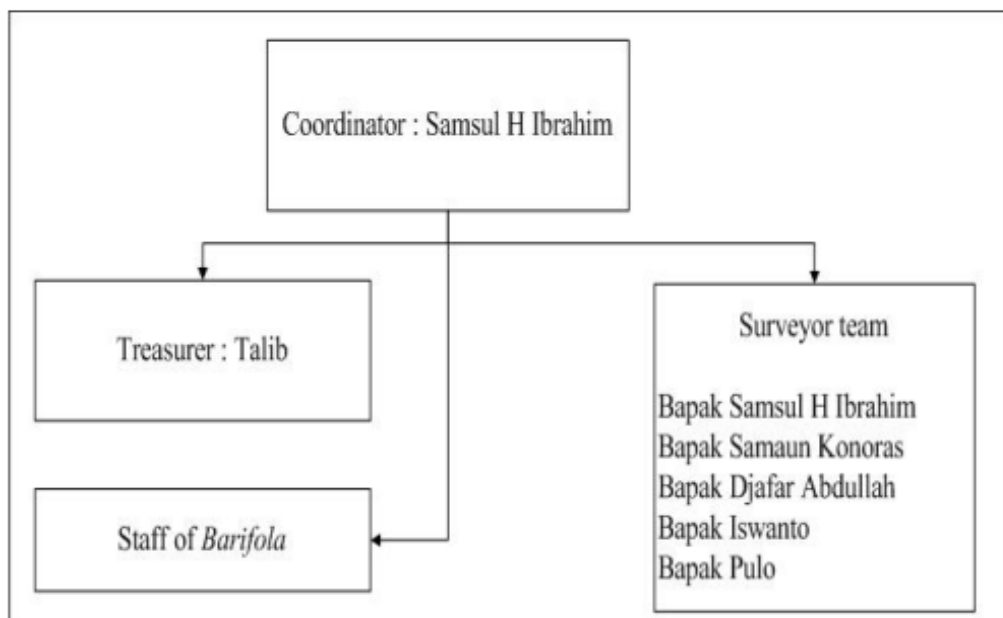


Fig 3:- Barifola Structure

C. *The Impact of Barifola*

The public's quality of life and the work performance of social institution can be influenced by the people's norms and network and also the successes that might happen in the society who involves socially. Barifola has a great performance that strongly influences other people to participate in developing livable houses which in the end it brings greater impacts for other impacts. There are two aspects as the impact of developing livable houses through Barifola; social and developing aspects.

➤ *Social Impact*

The tradition of Barifola can be useful to increase and push the growth of social solidarity between humans. Barifola also shows more social ethical value since it involves the whole society that is based on compassion.

The real tradition of Barifola is a cultural tradition of Indonesian who actually focuses on mutual interest equality. This tradition becomes the solution to eliminate social inequality especially in nowadays era when people tend to value everything from the material sides. The label of someone's social status generally is valued more from the occupation and possessed material like a house. But, the

traditions that Barifola brings are the solidarity values including charity, hospitality, and raise the awareness to help each other that people slowly forget it.

➤ *Development Impact*

The development of livable houses through Barifola program can give positive impacts in decreasing unlivable houses, especially in Ternate Island. The data are shown from the Department of Housing in Ternate, the total number of unlivable houses are around 41.409 units and only 1.126 units were renovated, so there are still 40.283 units left FOR Ternate government to handle. In the period of 2008-2018, especially in Ternate, Barifola has already built 140 units of livable house. From that data, it is concluded that Barifola brings positive impacts for Indonesia's development. The activity of Barifola is worth to be appreciated since the existence of it helps the society a lot especially for those who need. The program also helps the government in handling unlivable houses in the region.

IV. CONCLUSION

Barifola is a voluntary program in developing livable houses that are founded by the Community Organization of Tidore Family (IKT) in Ternate Island. It might bring a new breakthrough in social movement in changing society's behavior to be better. This initiative is spread already to other inhabitants of Ternate and as a collective action. As time goes by, Barifola can prove the fulfilling livable houses for those who need through collective acts. Besides, the existence of this program can be considered as Ternate Government's partner from the development aspect especially in providing livable houses.

It is important to remember that the effectivity of Barifola is from the local spirits that can be an amazing role model as the effort to grow community empowerment in the middle of individuality and economic competition that is getting tighter. The cultural values of Barifola can be an inspiration too for decision makers.

REFERENCES

- [1]. Putnam, R.D., (2000). *Bowling Alone: The Collapse and Revival of American Community*, New York: Simon and Schuster.
- [2]. Coleman, J.S., 1988, *Social Capital in the Creation of Human Capital*, *American Journal of Sociology*, Vol. 94, University of Chicago.
- [3]. Wu, s. Y., Wang, S. T., Liu, F., Hu, D. C., & Hwang, W. Y. (2012). *The Influences of Social Self Efficacy on Social Trust and Social Capital : A Case Study of Facebook*. *Turkish Online Journal of Educational Technology* , 246-254.
- [4]. Ostrom, Elinor., (2002), *Type of Goods and Colletive Action*, *Workshop in Political Theory and Policy Analysis*, Centre for the Study of Institutions, Population and Environmental Change, Indiana University.

- [5]. Hikmawati, E.,& Gutomo T. (2016). *Bedah Rumah sebagai Bentuk Pengentasan Kemiskinan*. *Jurnal PKS Vol 15 No 2*, pp 131-144
- [6]. Woolcock, M. (2001). *The Place of Social Capital in Understanding Social and Economi Outcome*. *Canadian Journal of Policy Research*, 2(1),1-17
- [7]. Alvarez, E. C.,& Romani, J.R. (2017). *Measuring Social Capital: Futher Insights*. *Special article*, 31 (1), pp 57-61
- [8]. Le, Anh Nguyeng Long, (2016). *does Social Capital Affect Immigrant Political Participation ? Lesson from a Small-N Study og Migran Political Participation in roma*. *Journal of International Migration and Integregation*, Vol 17, (3): pp.819-837
- [9]. Oesman, Herman, (2015). *Barifola Sebagai Warisan Nilai Kultur, Dalam BARIFOLA (hal 39-41)*. Ternate: UMMU Press
- [10]. Daud, M.S.(2015). *Barifola Spirit Sosial Kemanusiaan, Dalam BARIFOA (hal 53-55)*: Ternate: UMMU Press
- [11]. Samuda, Soleman. (2016). *Barifola sebagai Modal Sosial dan Instrumen Masyarakat Tanggung Bencana*. *Jurnal Penelitian Humaniora*, Vol 21, No. 2, 109-118